



Griffco Valve Inc.
 6010 N. Bailey Ave., Ste 1B
 Amherst, NY 14226
 Phone: 1 716 835-0891
 Fax: 1 716 835-0893

M-SERIES PRESSURE RELIEF VALVES



Features:

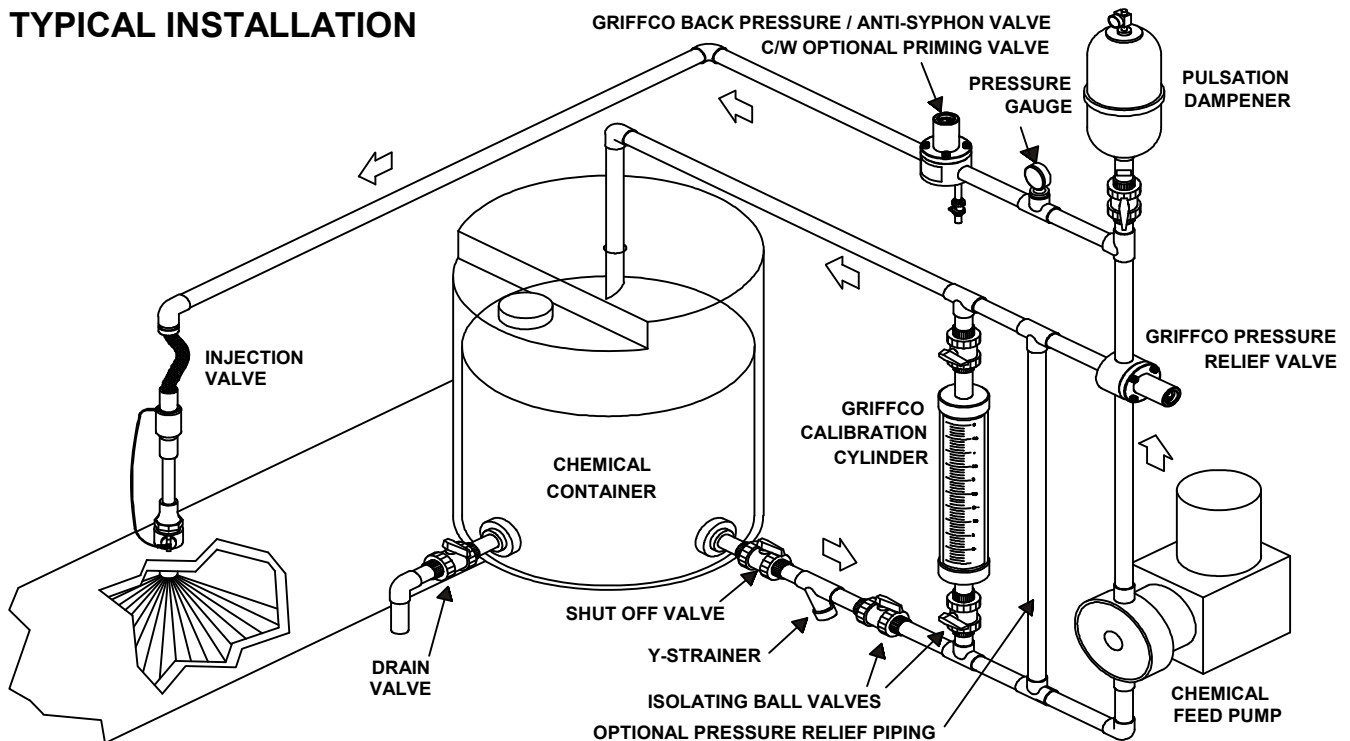
- NEW Molded Noryl Top
- High Reliability / Low Cost
- Compact Size for OEM Applications
- Adjustable Pressure Settings
- Optional 350 PSI Rated Valve
- 3 Port, 2 Port, & 90° Configuration
- Robust, Machined Body Construction
- Multiple Diaphragm Materials
- Wide Range of Valve Body Materials

Operation:

Griffco diaphragm pressure relief valves operate when the pressure in the chemical system exceeds the preset pressure of the valve. The diaphragm is held against the valve seat by an internal spring. When the preset pressure is exceeded the diaphragm is forced up and the chemical flows out the relief port, back to the chemical tank or to the suction side of the pump. The valves are pre-set at 50 psi, however they are field adjustable from 10 - 250 psi, (optional 350 psi) via the adjustment screw. The relief valve should be set approximately 15 psi higher than the system pressure. Installation should be made as close to the pump as possible, without any valves or accessories between the relief valve and the pump. Consult your pump manufacturer for his recommendations.

Griffco's new molded Noryl top extends the temperature and pressure rating of the standard valves. New valve designs continue to enhance the performance of chemical feed systems by applying a continuous back pressure to the chemical feed pump, while also acting as an anti-syphon valve. New construction ensures increased reliability in the rigorous service of municipal and industrial applications. Wetted materials include: **PVC, CPVC, PP, PVDF, PTFE, 316 SS, A 20 and Hast. C.** Available sizes: 1/4" - 1/2".

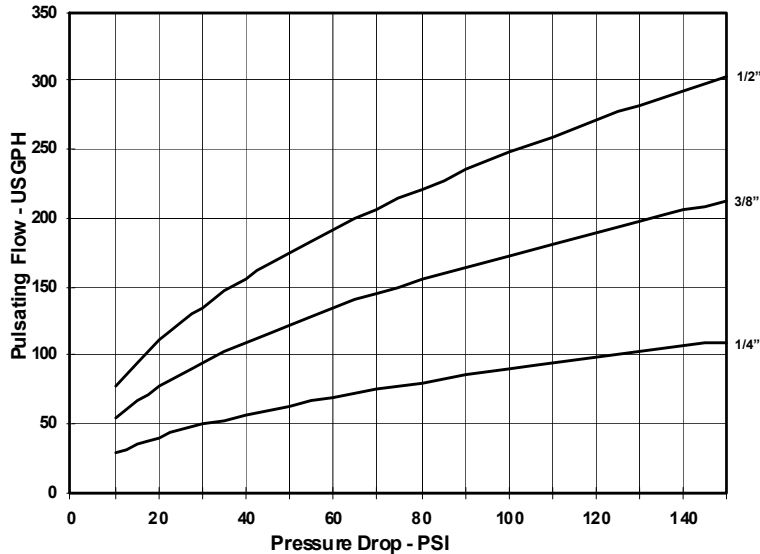
TYPICAL INSTALLATION



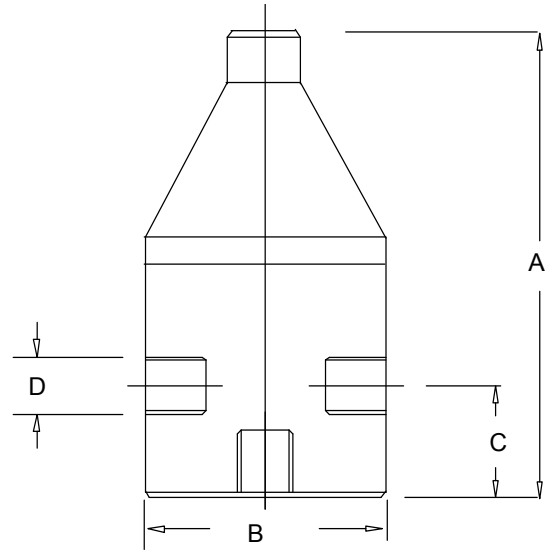
Technical Data:

Sizes: Model PRM		1/4", 3/8", 1/2"			
Connections:		NPT and Socket			
Pressure Adjustment		0 - 50 psi, 10 - 150 psi, 10 - 250 psi, 50 - 350 psi			
Flow Rates @ 150 psi		Shipping Weight: lbs			
Size	Pulsating	Continuous	Plastic	Metal / Plastic Top	Metal / Metal Top
1/4"	100 USgph	5 USgpm	1.0	2.5	3.0
3/8"	200 USgph	10 USgpm	1.0	2.5	3.0
1/2"	300 USgph	15 USgpm	1.0	3.0	3.5
Max Temperature: (°F)		PVC: 140°; CPVC & PP: 195°; PTFE & PVDF & Metal: 300°, (Peak 390°)			
Max Operating Pressure @ 70°F: (psi)		Plastic/Noryl: 375 psi, Metal /Metal: 2000 psi			
Materials of Construction:					
Diaphragm		PTFE / EPDM, Optional: Viton, Hypalon, Nitrile, PTFE / Viton			
Valve Top		Standard: Noryl Optional: 316 SS			
Valve Body		PVC, CPVC, PP, PTFE, PVDF, 316 SS, A 20, Hast. C, Others on Request			

Performance Curves:



Dimensions:



Product Codes for Ordering:

PRM

1 2 3

1 = Size

025 - 1/4"
038 - 3/8"
050 - 1/2"

2 = Material

P - PVC
CP - CPVC
PP - Polypro
T - PTFE
K - PVDF
S - 316 SS
A - Alloy 20
C - Hastalloy C

3 = Options

V - Viton Diaphragm
S - Socket Connections
U - Union Connections (1/2")
B - BSP Tread Connections
OSS - Optional 316 SS Top
MSS - 50 - 350 psi; 316 SS Top
AR - Optional Air Release Port

D	A	B	C
1/4" Plastic	3.55	2.35	0.75
1/4" Metal	3.55	2.35	0.75
3/8" Plastic	3.55	2.35	0.75
3/8" Metal	3.55	2.35	0.75
1/2" Plastic	4.25	2.35	1.08
1/2" Metal	4.25	2.35	1.08

Note: Option MSS is only for use on 316SS, A20, & Hast C Valves.