

Liquid End Sheet

LE-171S/ LE-172S/ LE-178S

When pumping solutions, make certain that all tubing is securely attached to the fittings. It is recommended that tubing or pipe lines be shielded to prevent possible injury in case of rupture or accidental damage. Always wear protective clothing and face shield when working on or near your metering pump.

Note: See parts list for materials of construction

A. INSTALLING INJECTION CHECK VALVE

1. The injection check valve should always be installed as close as possible to the point of injection, at the very end of the tubing run.
2. The purpose of the injection check valve is to prevent backflow from the treated line through the relief line of the metering pump.
3. A 1/2" NPT female fitting with sufficient depth will accept the injection check valve.
4. To insure correct seating of the ball inside the check valve, the injection check valve should be installed vertically, in the direction of the arrows indicating flow.

B. CONNECTING DISCHARGE TUBING

NOTE: Cut tubing to length needed for discharge line.

1. Discharge tubing is relatively stiff translucent tubing.
2. Route tubing from the injection check valve to the metering pump, making sure it does not touch hot or sharp surfaces, or is bent so sharply that it kinks.
3. Slide small end of the coupling nut onto tubing, then slide on the clamp ring.
4. Push tubing over the tapered nozzle of discharge valve housing so that tubing flares out and reaches the shoulder. (If tubing is stiff from cold, dip end in hot water).
5. Slide down the clamp ring and coupling nut until threads are engaged. Tighten by hand until tubing is held securely in place.

**Excessive force will crack or distort fittings.
DO NOT OVERTIGHTEN.**

6. Follow the same procedure for connecting tubing to injection valve.

NOTE: When pumping solutions of medium to high viscosity, the anti-syphon valve may reduce output as much as 10%.

C. CONNECTING SUCTION TUBING

1. Cut suction tubing to a length so that the foot valve hangs just above the bottom of the solution container. Maximum recommended vertical suction lift is 5 ft (1.5 m).

2. Follow same procedure in connecting suction tubing to suction valve and foot valve (see **B. Connecting Discharge Tubing**).

D. PRIMING

1. Connect the pressure release tubing to pressure release port on the four function valve.
2. Route tubing to the solution reservoir and anchor with a plastic tie.
3. Set the pump at 80% speed and 100% stroke. Start pump.
4. Turn Pressure Relief knob (black knob) 1/4 turn. Let pump run until solution is visible through translucent return tubing.
5. Turn Pressure Relief knob back 1/4 turn. The pump is now primed.

NOTE:

- (a) Pump is normally self-priming if suction lift is not more than 5 ft (1.5 m), valves in the pump are wet with water (pump is shipped from factory with water in pump head) and the above steps (**D. Priming**) are followed.
- (b) If the pump does not self prime, remove discharge valve housing and ball, and pour water or solution slowly into discharge port until head is filled. Follow step **D. Priming** thereafter.

E. DEPRESSURIZING DISCHARGE LINE

1. It is possible to depressurize the discharge line and pump head without removal of tubing or loosening of fittings.

Be sure injection check valve is properly installed and is operating. If a gate valve or globe has been installed downstream of injection check valve, it should be closed. Be certain relief tubing from the four function valve is connected and run to solution reservoir.

2. Pull on both anti-syphon and relief knobs.
3. The discharge line is now depressurized.
4. If the injection check valve is of higher elevation than the pump head, disconnecting tubing at injection check valve end will allow air to enter and cause solution to drain back to the tank.

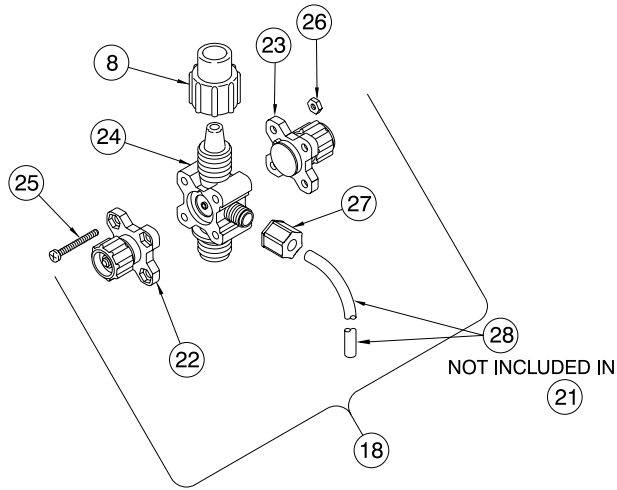


8 Post Office Square
Acton, MA 01720 USA
TEL: (978) 263-9800
FAX: (978) 264-9172
<http://www.lmipumps.com>

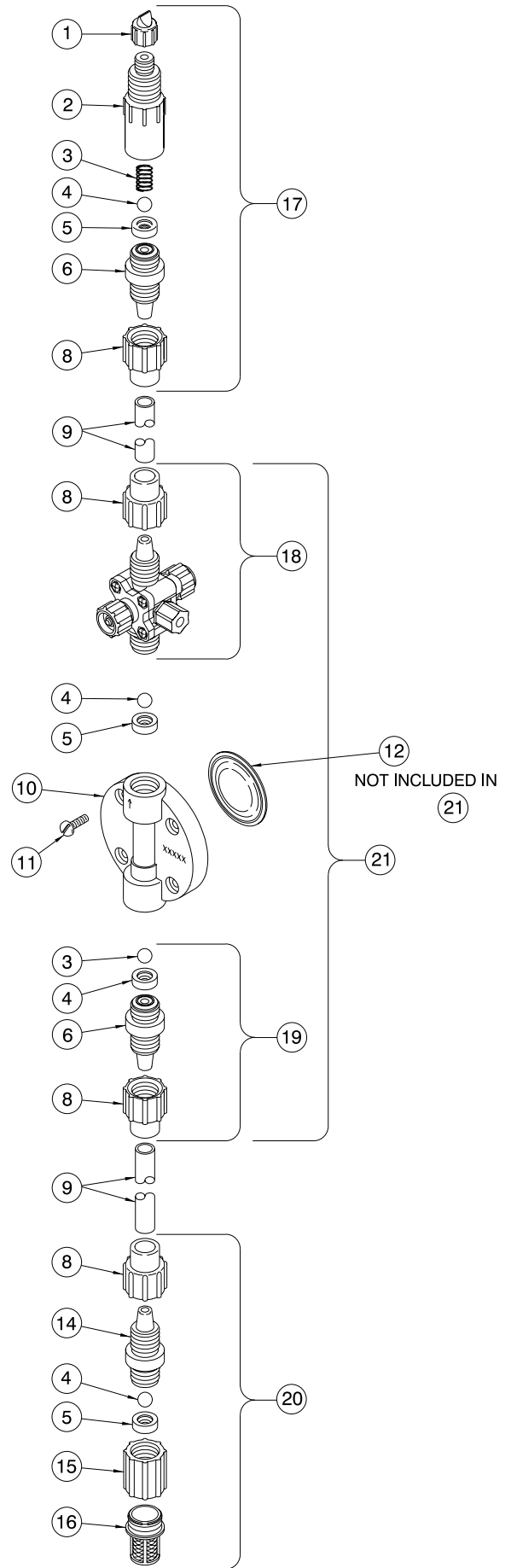


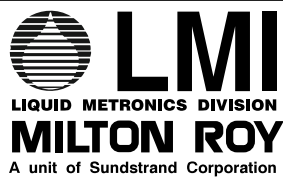
KEY NO.	PART NO.	DESCRIPTION	QUANTITY		
			LE-171S	LE-172S	LE-178S
1	27352	Flapper Valve	1	1	1
2	10394	Injector Fitting, PP	1		
	26841	Injector Fitting, PVDF		1	
	10294	Injector Fitting, PVC			1
3	10339*	Spring, PVDF Coated	1	1	1
4	10338*	Ball, Ceramic .375	4	4	4
5	29443*	Seal Ring, Polyprel®	4	4	4
6	10792	Valve Seat, PP, .500"	2		
	31561	Valve Seat, PVDF, .500"		2	
	10492	Valve Seat, PVC, .500"			2
8	10411	Coupling Nut	4	4	4
9	10142-16	Tubing, .500" O.D. PE	1	1	1
10	27212	Head, PP, 1.8 SI	1		
	27214	Head, PVDF, 1.8 SI		1	
	30914	Head, PVC, 1.8 SI			1
11	10340	Screw, 10-24 x 3/4" S.S.	4	4	4
12	31420*	Liquifram™, 1.8 SI Copolymer PTFE	1	1	1
14	10793	Valve Housing, PP, .500" O.D.	1		
	31562	Valve Housing, PVDF, .500"		1	
	10493	Valve Housing, PVC, .500"			1
15	10978	Foot Valve Seat	1	1	1
16	10123	Strainer, Polypropylene	1	1	1
17	29523	Injection Pressure Valve Assembly	1		
	31564	Injection Pressure Valve Assembly		1	
	32087	Injection Pressure Valve Assembly			1
18	25900	Anti-Syphon/Pressure Relief Valve Assembly	1		
	27043	Anti-Syphon/Pressure Relief Valve Assembly		1	
	33060	Anti-Syphon/Pressure Relief Valve Assembly			1
19	29527	Suction Valve Assembly	1		
	31961	Suction Valve Assembly		1	
	27612	Suction Valve Assembly			1
20	29524	Foot Valve Assembly	1		
	31563	Foot Valve Assembly		1	
	27613	Foot Valve Assembly			1
21	29056	Head Assembly, LE-171S, PP	1		
	29062	Head Assembly, LE-172S, PVDF		1	
	31223	Head Assembly, LE-178S, PVC			1
22	28446	Relief Cap Assembly	1		1
	28447	Relief Cap Assembly		1	
	33024	Relief Cap Assembly			1
23	25838	Anti-Syphon Cap Assembly	1		1
	27045	Anti-Syphon Cap Assembly		1	
	31138	Anti-Syphon Cap Assembly			1
24	25870	Valve Body, PP, .500"	1		
	26856	Valve Body, PVDF, .500"		1	
	30426	Valve Body, PVC, .500"			1
25	25627	Screw, 6-32 x 1 1/4" S.S.	4	4	4
26	25628	Nut, Hex 6-32 S.S.	4	4	4
27	25631	Coupling Nut	1	1	1
28	25636-10	Tubing, .250" O.D. PE	1	1	1
29	37203	Clamp Ring	3	3	3
---	32293	Suction Tubing Straightener (not shown)	1	1	1

*Parts included in Spare Parts Kit Sp-U10.



NOTE:
 Threaded connections into pump head are 3/4"-16 UNF straight threads. **DO NOT USE TEFLON® TAPE.** These joints are sealed by seal ring valve seats (item 6 on exploded view).





8 Post Office Square
Acton, MA 01720 USA
TEL: (978) 263-9800
FAX: (978) 264-9172
<http://www.lmipumps.com>