

Liquid End Sheet

LE-158S / LE-158SU

When pumping solutions, make certain that all tubing is securely attached to the fittings. It is recommended that tubing or pipe lines be shielded to prevent possible injury in case of rupture or accidental damage. Always wear protective clothing and face shield when working on or near your metering pump.

Note: See parts list for materials of construction

A. INSTALLING INJECTION CHECK VALVE

1. The purpose of the injection check valve is to prevent backflow from the treated line.
2. A 1/2" NPT female fitting with sufficient depth will accept the injection check valve.
3. To insure correct seating of the ball inside the check valve, the injection check valve must be installed vertically (upwards).

B. CONNECTING DISCHARGE TUBING

NOTE:

Cut tubing to length needed for discharge line.

1. Route tubing from the injection check valve to the metering pump, making sure it does not touch hot or sharp surfaces, or is bent so sharply that it kinks.
2. Slide the small end of the coupling nut onto tubing.
3. Slide the long, straight end of the ferrule onto tubing such that tubing exits at the cone shaped end of the ferrule.
4. Insert tubing into the discharge valve housing so that tubing butts up against valve housing and will not go any further.
5. Slide ferrule down so that the cone shaped end fits snugly into discharge valve housing.
6. Slide down the coupling nut to the threads and engage. While pushing tubing into valve housing, tighten the coupling nut by hand until tubing is held securely in place.

**Excessive force will crack or distort fittings.
DO NOT USE PIPE WRENCH.**

7. Follow the same procedure for connecting tubing to injection valve.

C. CONNECTING SUCTION TUBING

1. Cut suction tubing to a length so that the foot valve hangs just above the bottom of the solution container. Maximum recommended vertical suction lift is 5 ft (1.5 m).

2. Follow same procedure in connecting suction tubing to suction valve and foot valve (see **B. CONNECTING DISCHARGE TUBING**).

D. PRIMING

1. Connect pressure release tubing to pressure release port on the four function valve.
2. Route tubing to solution reservoir and anchor with a plastic tie. Do not submerge tubing in solution.
3. Set pump at 80% speed and 100% stroke. Start pump.
4. Pull on Pressure Release knob (red or black knob), holding knob out until solution is visible through translucent return tubing.
5. The pump is now primed.

NOTE:

- (a) Pump is normally self-priming if suction lift is not more than 5 ft (1.5 m), valves in the pump are wet with water (pump is shipped from factory with water in pump head) and the above steps **D. PRIMING** are followed.
- (b) If the pump does not self prime, remove discharge valve housing and ball and pour water or solution slowly into discharge port until head is filled. Follow step **D. PRIMING** thereafter.

E. DEPRESSURIZING DISCHARGE LINE

1. It is possible to depressurize the discharge line and pump head without removal of tubing or loosening of fittings.

Be sure injection check valve is properly installed and is operating. If a gate valve or globe has been installed downstream of injection check valve, it should be closed. Be certain relief tubing is connected and run to solution reservoir.

2. Pull on both anti-syphon and relief knobs.
3. The discharge line is now depressurized.
4. If injection check valve is of higher elevation than pump head, disconnecting tubing at injection check valve end will allow air to enter and cause solution to drain back to tank.

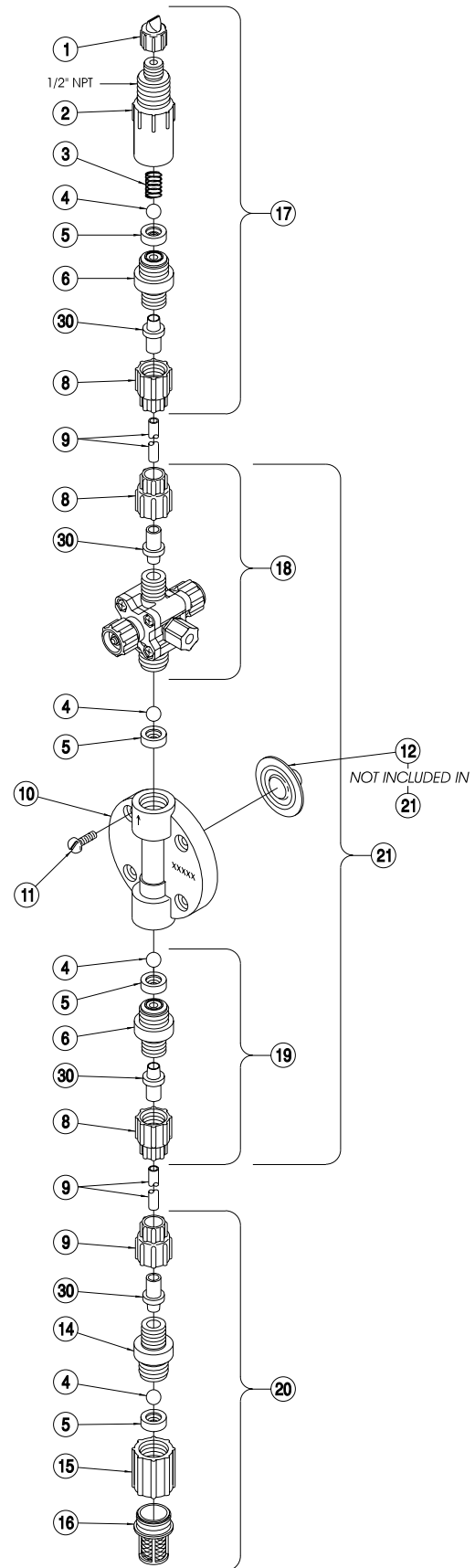
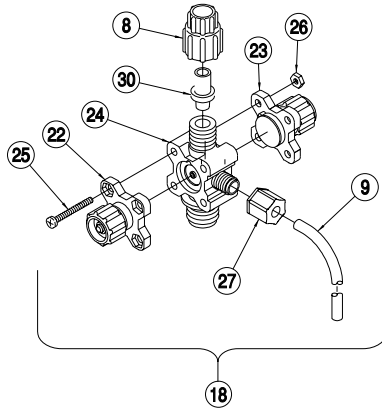


8 Post Office Square
Acton, MA 01720 USA
TEL: (508) 263-9800
FAX: (508) 264-9172
<http://www.lmipumps.com>



NOTE:

Threaded connections into pump head are 3/4"-16 UNF straight threads. **DO NOT USE TEFLON TAPE.** These joints are sealed by seal ring valve seats (item 5 on exploded view).



KEY NO.	PART NO.	DESCRIPTION	QUANTITY	
			LE-158S	LE-158SU
1	27352	Flapper Valve, Flexoprene	1	1
2	10294	Injector Fitting, PVC	1	1
3	10339*	Spring, PVDF	1	1
4	10338*	Ball, Ceramic .375	4	4
5	29443*	Seal Ring, Polyprel	4	4
6	30383	Valve Seat, PVC	2	2
8	10299	Coupling Nut	4	4
9	25636-16	Tubing, 1/4" O.D. PE	1	
	25636-10	Tubing, 1/4" O.D. PE	1	
	28636-10	Tubing, 1/4" O.D. UVPE		1
	28636-16	Tubing, 1/4" O.D. UVPE		1
10	30912	Head, 0.5 SI PVC		1
11	10340	Screw, 10-24 x 3/4" SS	4	4
12	30916*	Liquifram, 0.5 SI TFE Co-Polymer	1	1
14	30375	Valve Housing, PVC	1	1
15	10978	Foot Valve Seat	1	1
16	10123	Strainer, Polypropylene	1	1
17	30919	Inj. Check Valve Assembly	1	1
18	30635	Anti-Syphon/Pressure Relief Valve Asm	1	
	31683	Anti-Syphon/Pressure Relief Valve Asm		1
19	30924	Suction Valve Asm	1	1
20	30921	Foot Valve Asm	1	1
21	30935	Head Asm, LE-158S	1	
	31681	Head Asm, LE-158SU		1
22	33024	Relief Cap Assembly	1	1
23	33138	Anti-Syphon Cap Assembly	1	1
24	30424	Valve Body, PVC	1	1
25	25627	Screw, 6-32 x 1 1/4" SS	4	4
26	25628	Nut, Hex 6-32 SS	4	4
27	25631	Coupling nut	1	1
30	28663	Ferrule	4	4
	32293	Suction Tubing Straightener (not shown)	1	1

*Parts included in Spare Parts Kit Sp-U8