

# Liquid End Sheet

## LE-111/ LE-112/ LE-118

When pumping solutions, make certain that all tubing is securely attached to the fittings. It is recommended that tubing or pipe lines be shielded to prevent possible injury in case of rupture or accidental damage. Always wear protective clothing and face shield when working on or near your metering pump.

**Note: See parts list for materials of construction**

### A. INSTALLING INJECTION CHECK VALVE

1. The purpose of the injection check valve is to prevent backflow from the treated line.
2. A ½" NPT female fitting with sufficient depth will accept the injection check valve.
3. To insure correct seating of the ball inside the injection check valve, the injection check valve should be installed upwards (vertically) into bottom of the pipe.

### B. CONNECTING DISCHARGE TUBING

**NOTE:** Cut tubing to length needed for discharge line.

1. Route tubing from the injection check valve to the metering pump, making sure it does not touch hot or sharp surfaces, or is bent so sharply that it kinks.
2. Slide the small end of the coupling nut onto tubing, then slide on the clamp ring.
3. Push tubing on the valve housing nozzle so that tubing flares out and butts up against valve housing and will not go any further.
4. Slide the clamp ring and coupling nut to the threads and engage. While pushing the tubing into valve housing nozzle, tighten the coupling nut by hand until tubing is held securely in place.

**Excessive force will crack or distort fittings.  
DO NOT USE PIPE WRENCH.**

### C. CONNECTING SUCTION TUBING

1. Cut suction tubing to a length so that the foot valve hangs just above the bottom of the solution container. Maximum recommended vertical suction lift is 5 ft (1.5 m).
2. Follow same procedure in connecting suction tubing to suction valve and foot valve (see **B. Connecting Discharge Tubing**).

### D. PRIMING

1. Temporarily remove tubing from the injection check valve and hold the end of tubing so it is above the level of the pump.
2. Start pump. Set at 80% speed and 100% stroke.
3. As soon as solution is visible through translucent discharge tubing, just past the discharge valve, stop the pump.
4. The pump is now primed.
5. Reconnect tubing to the injection check valve.

### NOTE:

- (a) Pump is normally self-priming if suction lift is not more than 5 ft (1.5 m), valves in the pump are wet with water (pump is shipped from factory with water in pump head) and the above steps (**D. Priming**) are followed.
- (b) If the pump does not self prime, remove discharge valve housing and ball and pour water or solution slowly into discharge port until head is filled. Follow step **D. Priming** thereafter.



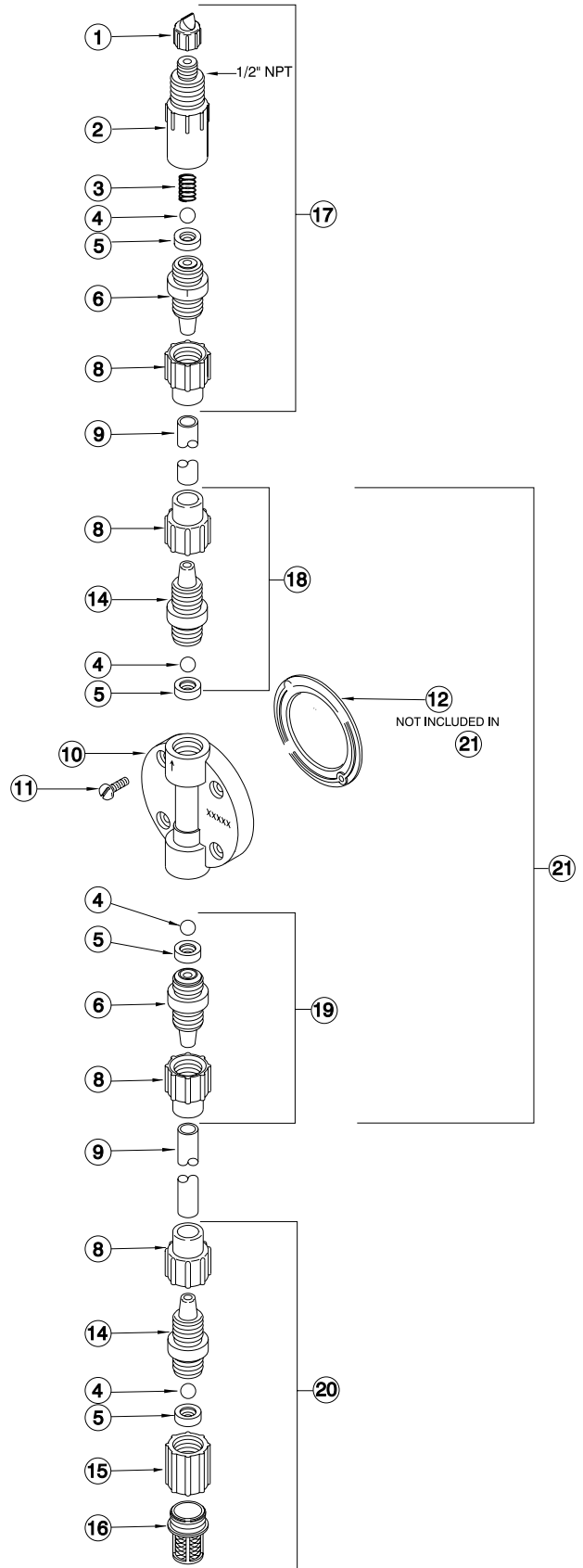
8 Post Office Square  
Acton, MA 01720 USA  
TEL: (978) 263-9800  
FAX: (978) 264-9172  
<http://www.lmipumps.com>



**NOTE:**

Threaded connections into pump head are 3/4"-16 straight threads. **DO NOT USE TEFLON® TAPE.** These joints are sealed by seal ring valve seats (item 6 on exploded view).

KEY NO.	PART NO.	DESCRIPTION	QUANTITY		
			LE-111	LE-112	LE-118
1	27352	Flapper Valve, Flexiprene™	1	1	1
2	10294	Injector Fitting, PVC			1
	10394	Injector Fitting, PP	1		
	26841	Injector Fitting, PVDF		1	
3	10339*	Spring, PVDF	1	1	1
4	10338*	Ball, Ceramic .375"	4	4	4
5	29443*	Seal Ring, Polyprel®	4	4	4
6	10492	Valve Seat, .500", PVC			2
	10792	Valve Seat, .500", Polypropylene	2		
	31561	Valve Seat, .500", PVDF		2	
8	10411	Coupling Nut	4	4	4
9	10142-16	Tubing, .500" O.D., Polyethylene	1	1	1
10	30915	Head, 3.0, SI, PVC			1
	31052	Head, 3.0, SI, PP	1		
	31053	Head, 3.0, SI, PVDF		1	
11	10340	Screw, 10-24 x 3/4" SS	4	4	4
12	31419*	Liquifram™, 3.0, Copolymer PTFE	1	1	1
14	10493	Valve Housing, .500", PVC			2
	10793	Valve Housing, .500", PP	2		
	31562	Valve Housing, .500", PVDF		2	
15	10978	Foot Valve Seat	1	1	1
16	10123	Strainer, Polypropylene	1	1	1
17	29523	Injection Check/Valve Assembly	1		
	32087	Injection Check/Valve Assembly			1
	31564	Injection Check/Valve Assembly		1	
18	29526	Discharge Valve Assembly	1		
	27611	Discharge Valve Assembly			1
	31960	Discharge Valve Assembly		1	
19	27612	Suction Valve Assembly			1
	29527	Suction Valve Assembly	1		
	31961	Suction Valve Assembly		1	
20	27613	Foot Valve Assembly			1
	29524	Foot Valve Assembly	1		
	31563	Foot Valve Assembly		1	
21	31228	Head Assembly, LE-118			1
	31962	Head Assembly, LE-112		1	
	32650	Head Assembly, LE-111	1		
22	37203	Clamp Ring	3	3	3
---	32293	Tubing, Straightener (not shown)	1	1	1



\*Parts included in Spare Parts Kit SP-U17.