

LE-75SN LE-95SN LIQUID HANDLING ASSEMBLIES

CAUTION

When pumping solutions make certain that all tubing is securely attached to the fittings. It is recommended that tubing or pipe lines be shielded to prevent possible injury in case of rupture or accidental damage. Always wear protective clothing and face shield when working on or near metering pump.

NOTE: See parts list for materials of construction

A. INSTALLING INJECTION CHECK VALVE

1. The purpose of the injection check valve is to prevent backflow from the treated line.
2. A 1/2" NPT female fitting with sufficient depth will accept the injection check valve.
3. To insure correct seating of the ball inside the check valve, the injection check valve should be installed upwards (vertically).

B. CONNECTING DISCHARGE TUBING

NOTE:

Corrosion resistant 1/4" Schedule 80 pipe should be used. Do not use 1/8" pipe.

1. Discharge valve has a 1/4" NPT male outlet. A 1/4" union should be connected to both discharge and suction valves so that the metering pump may be removed without disturbing piping.

IT IS RECOMMENDED THAT TEFLON TAPE BE USED ON TAPERED PIPE THREADS SO THAT THERE IS A LEAK-PROOF SEAL WITHOUT OVERTIGHTENING OF FITTINGS.

C. CONNECTING SUCTION PIPE

1. Using the same size and material pipe as used on the discharge line, cut suction pipe to required length.
2. It is recommended that Teflon tape be used on tapered pipe threads so that there is a leakproof seal without overtightening of fittings. Suction side leaks are invisible, but if present will cause pump to suck in air during each suction stroke.
3. Maximum recommended vertical suction lift is 5ft. (1.5m).

D. PRIMING

1. Connect the pressure release tubing to the pressure release port.

2. Route tubing to the solution reservoir and anchor with a plastic tie.
3. Set the pump at 80% speed and 100% stroke. Start the pump.
4. Pull on pressure Release knob (red or black knob), holding knob out until solution is visible through translucent return tubing.
5. Pump is now primed.

NOTE:

(a) Pump is normally self-priming if suction lift is no more than 5 ft. (1.5m), valves in the pump are wet with water (pump is shipped from factory with water in pump head and therefore the valves are wet), and the above steps are followed (D. Priming).

(b) If the pump does not self-prime, remove discharge valve housing and ball. Pour water or solution slowly into discharge port until it is filled. Follow steps above thereafter (D. Priming).

E. DEPRESSURIZING DISCHARGE LINE

1. It is possible to depressurize the discharge line and pump head without removal of tubing or loosening of fittings.
Be sure injection valve is properly installed and is operating. If a gate valve or globe has been installed downstream of injection valve, it should be closed. Be certain relief tubing is connected and run to chemical reservoir.
2. Pull on both the anti-syphon and relief knobs.
3. The discharge line is now depressurized.
4. If the injection check valve is at a higher elevation than the pump head, disconnecting tubing at injection check valve end will allow air to enter and cause chemical to drain back to tank.



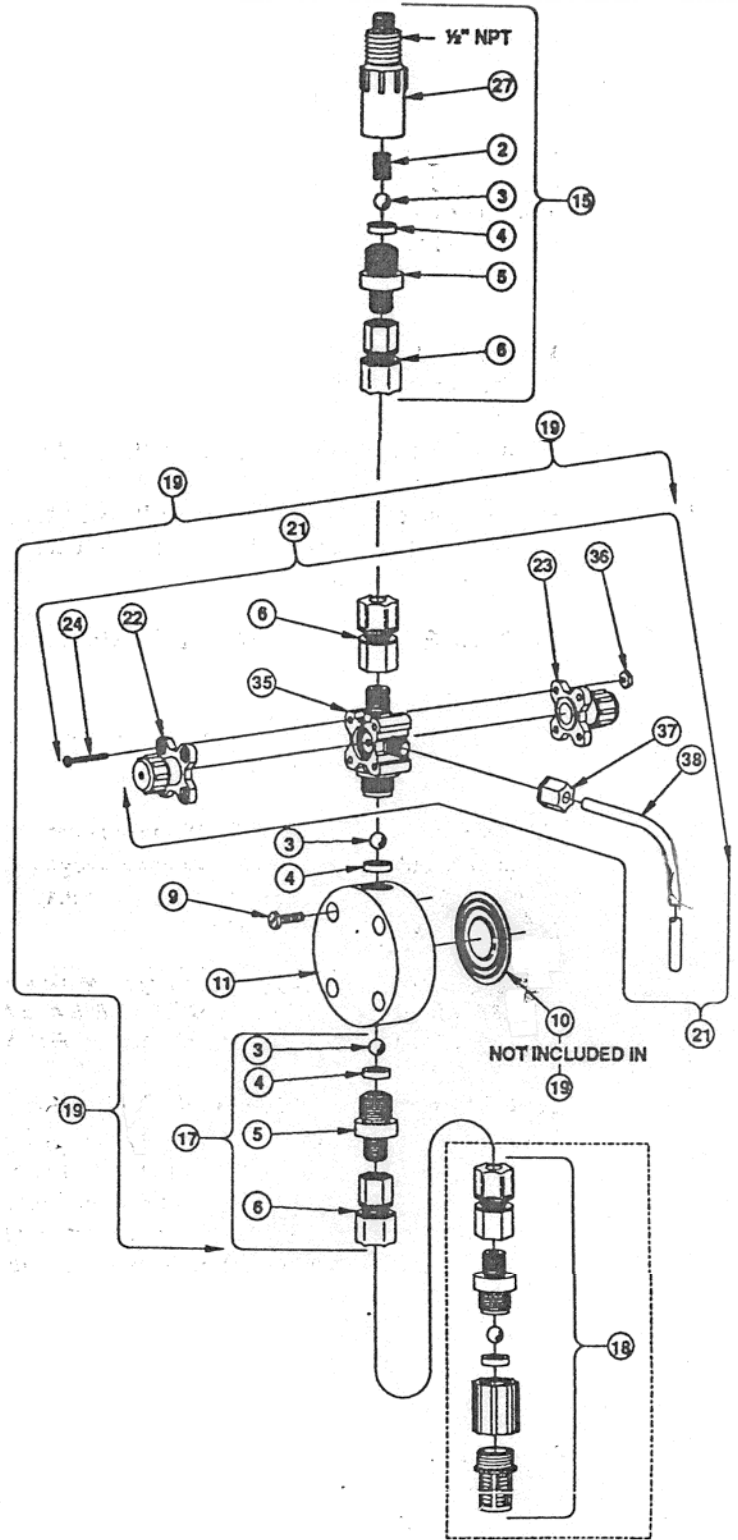
LMI
LIQUID METRONICS DIVISION
MILTON ROY

8 Post Office Square
Acton, MA 01720 U.S.A.
TEL (508) 263-9800
FAX (508) 264-9172

Replaces same of 1/89
1450.C 1/94

LE-75SN & LE-95SN

KEY NO.	PART NO.	DESCRIPTION	QUANTITY	
			LE-75SN	LE-95SN
2	10399^A	Spring, PVDF	1	1
3	10338^A	Ball, Ceramic .375"	3	3
4	10407^A	Seal Ring, Teflon	3	3
5	10792 -1	Valve Seat, Polypropylene	2	2
6	30691	Connector, Female 3/8" Nylon	3	3
9	10340	Screw, 10-24 x 3/4" S.S.	4	4
10	31420^A	Liquifram, 1.8 Fluorofilm	1	0
10	30917^*	Liquifram, 0.9 Fluorofilm	0	1
11	10304	Head, Polypropylene 1.8	1	0
11	10313M	Head, Polypropylene 0.9	0	1
15	30760	Injection Check/Back Pressure Asm	1	1
17	30770	Suction Valve Assembly	1	1
19	30764	Head Assembly, LE-75SN 1.8	1	0
19	30763	Head Assembly, LE-95SN 0.9	0	1
21	26615	Anti-Syphon/Pressure Relief Valve Asm	1	1
22	25837	Pressure Release Cap Assembly	1	1
23	25838	Anti-Syphon Cap Assembly	1	1
24	25627	Screw 6-32 x 1 1/4" S.S.	4	4
27	10394	Injector Fitting, Polypropylene	1	1
35	25870 -1	Valve Body	1	1
36	25628	Nut, 6-32 Hex, S.S.	4	4
37	25631	Nut, Ferrule	1	1
38	25636 -10	Tubing, Polyethylene .250 O.D. x .62	1	1



*Parts included in Spare Parts Kit No. SP-U1

^Parts included in Spare Parts Kit No. SP-U2