

LE-917

LIQUID HANDLING ASSEMBLY

CAUTION

When pumping solutions make certain that all piping is securely attached to the fittings. It is recommended that piping be shielded to prevent possible injury in case of rupture or accidental damage. Always wear protective clothing and face shield when working on or near your metering pump.

Note: See parts list for materials of construction

A. NOTES

- All debris must be cleaned or blown out of piping before connecting to the H9 pump.
- The outer flange of the suction and discharge valves must be supported when connecting suction and discharge piping, to prevent overtightening.
- All N.P.T. threaded connections require Teflon Tape.
- All piping must be installed so that it does not place a supportive load on the Liquid End.
- The H9 pump is capable of generating 1000 PSI. Care must be given to make sure that the piping used is capable of withstanding maximum pressure.
- Adhere to all plumbing regulations and codes.
- The use of an in-line 100 micron filter or strainer in the suction line is highly recommended to keep the pump clear of debris which may impede the performance of the pump.

B. DISCHARGE AND SUCTION PIPE CONNECTIONS

Note: Flooded suction is required for proper pump operation.

The Suction and Discharge Valve assemblies have 1/8" N.P.T. male threads which will require the use of Teflon tape when connecting to your system. Be careful not to over-wrap the ends or ports of the valves with the Teflon tape.

It is recommended that a pipe union be installed on both the Suction and Discharge piping, so that the H9 can be removed if required.

After applying the Teflon tape, connect piping to the Suction side of the pump. Place and hold a 7/8" wrench across the flats on the lower body of the check valve. This is to allow the tightening of the fitting without over tightening of the check valve. Tighten the fittings and repeat this procedure for the Discharge side of the H9 pump, while holding the wrench across the flats on the upper body of the check valve.

C. PRIMING

*Note: The H9 Control Panel has a STOP/START button labeled **Hold for Prime**. This function has a cycle time of one minute. The lengthy priming time of the H9 renders this function unusable.*

Note: To ensure pump performance and quality, all pumps are tested with water at maximum rated pressure, before they leave the factory. If the chemical that is being pumped is not compatible with water, disassemble the pump head assembly and dry all components.

- 1.) Plug in, or power up the pump.
- 2.) Set the pump to the Internal Mode by pressing and holding the Int/Ext button for three seconds, or until the display reads "Int".
- 3.) With the pump running, set the stroke dial to 100%
- 4.) Set the pump speed to 100.

Make sure that any valves installed in the suction or discharge line are open to allow the free flowing of chemicals. To verify the pumps output, installation of an LMI calibration column in the suction line is recommended.

Note: The H9 pump is a high pressure, low volume, precision metering pump. It injects very small amounts of chemical. Due to this characteristic, the H9 will take a considerable amount of time to prime.

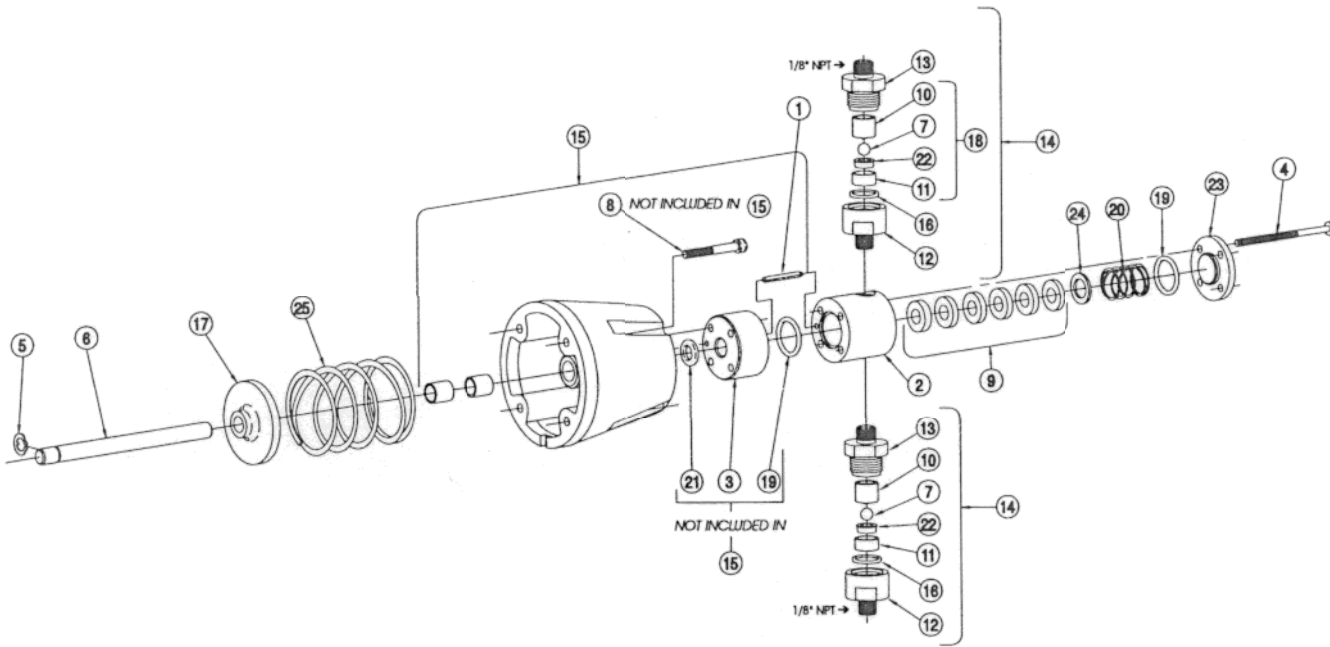


LMI
LIQUID METRONICS DIVISION
MILTON ROY

ISO9001 Certified • a unit of Sundstrand Corporation

8 Post Office Square
Acton, MA 01720 U.S.A.
TEL (508) 263-9800
FAX (508) 264-9172

Note: Threaded connections into pump head are 1/8" NPT threads. **The use of TEFLON TAPE, is required.**



KEY NO.	PART NO.	DESCRIPTION	QTY.
			LE-917
1	10145	Locating Pin	1
2	34079	Head, 316 S.S.	1
3	34080	Spacer, 316 S.S.	1
4	34106	Screw, 8-32 x 2.75 PH	4
5	34145	Retaining Ring	1
6	34146	Plunger, 316 S.S.	1
7	34147	Ball, 316 S.S.	2
8	34148	Screw, 10 - 24 Socket Head	4
9	34150	Seal Stack, Teflon + Viton	1
10	34686	Ball Guide, Tefzel	2
11	34689	Seal Ring Retainer, Tefzel	2
12	34762	Valve Seat, 316 S.S.	2
13	34763	Valve Housing, 316 S.S.	2
14	34773	Valve Assembly	2
15	34775	Adapter Assembly	1
16	34776	O-ring, Polyprel	2
17	34778	Spring Retainer	1
18	34781	Cartridge Assembly	2
19	34839	O-ring, Polyprel	2
20	35063	Spring, Hastelloy C-276	1
21	35153	O-ring, Teflon	1
22	35719	Seal Ring, Teflon	2
23	35739	Cover, 316 S.S.	1
24	35989	Washer, 316 S.S.	1
25	35990	Spring	1